

# A VIEW FROM THE STEEPLE

*October 2009*

The ***View from the Steeple*** is published monthly by The Congregational Church of Plainville, UCC.

**The Rev. Dr. Claire W. Bamberg**.....  
**Transitional Minister** Office: (860) 747-1901

**Cheryl Cone and Suzanne Colley**.....  
.....Church School Superintendents

**Matthew Bartlett**.....  
.....Director of Choirs and Organist

**Barbara Steele**..... Church Secretary  
Office Phone & Fax: (860) 747-1901

**Church Email:** congregational9486@sbcglobal.net

**Church Website:** [www.UCCPlainville.org](http://www.UCCPlainville.org)

\*\*\*\*\*

## *Ministerial Musings, October 2009*

Rev. Claire has invited a "guest" to this spot this month. Here, in response to many requests for this writing, is the piece that Carl Binder brought to worship one morning. It was so perfect for that day's message, that Rev. Claire read it during worship. It touched many a heart. God *is* still speaking in, with, and through us all. Thank you, Carl, for bringing us God's message through this piece:

### **VALUE THE PRESENT**

Imagine there is a bank that credits your account each morning with \$86,400.

It carries over no balance from day to day.

Every evening it deletes whatever part of the balance you failed to use during the day.

What would you do?

Draw out every penny, of course!

Each of us has such a bank.

Its name is TIME.

Every morning, it credits you with 86,400 seconds.

Every night, it writes off as lost, whatever of this you have failed to invest to good purpose.

It carries over no balance.

It allows no overdraft.

Each day it opens a new account for you.

Each night it burns the remains of the day.

If you fail to use the day's deposits, the loss is yours.

There is no going back.

There is no drawing against the 'tomorrow'.

You must live in the present day's deposits.

Invest it so as to get from it the utmost in health, happiness and success!

The clock is running.

Make the most of today.

To realize the value of ONE YEAR, ask the student who failed an exam.

To realize the value of ONE MONTH, ask the mother who gave birth to a pre-mature baby.

To realize the value of ONE WEEK, ask the editor of a weekly newspaper.

To realize the value of ONE HOUR, ask the lovers who are waiting to meet.

To realize the value of ONE MINUTE, ask a person who missed the train.

To realize the value of ONE SECOND, ask the person who just avoided an accident.

To realize the value of ONE MILLISECOND, ask the person who won the silver medal in the Olympics.

Treasure every moment that you have!

And treasure it more because you have shared it with someone special, special enough to spend your time.

And remember, time waits for no-one.

Yesterday is history.

Tomorrow is a mystery.

Today is a gift.

That's why it's called the present!!



## *MUSIC NOTES...*

### **WANTED: ALL MUSICIANS**

The Music Committee invites all young people (grades 1 & up) interested in joining the Youth Choir to see Choir Director Matthew Bartlett or any member of the Music Committee.

### **CALLING ALL RINGERS!**

The Amadeus Ringers handbell choir is beginning rehearsals Wednesdays at 6:45 P.M. Anyone interested is encouraged to see Handbell Director Matthew Bartlett or a Music Committee member (Kathie Marsan, Jocelyn Michaud or Bev Letendre).

### **Join the Choir**

**Three Good Reasons to join the choir:**

**You Enjoy Singing**

**You and your friends love to laugh and have fun**

**You like making new friends**



**Sign up today!!!!**

### **THRIFT SHOP NEWS**

The Shop re-opened on September 2<sup>nd</sup> after 3 weeks of renovations. We were very excited with the transformation; it was certainly worth the many hours the dedicated volunteers spent on this huge task. Our customers also love the changes! They have commented that the Shop looks much larger and brighter. If you haven't seen it as yet, do stop down!

# CT Women of the UCC Announce Fall Meeting



**SAVE THIS DATE**

**Saturday, October 3, 2009!**

That is when UCC women across the state are **invited to gather for our Fall meeting: "Healthy Women; Healthy Environment"** at the Asylum Hill Congregational Church in Hartford. This is a follow up to the CT Conference Annual Meeting: **"Body & Soul~The Church and Healthcare."**

We'll have the opportunity to choose **one of two workshops**: learn and ask questions concerning women's health issues, led by area physicians; or, become informed about the environment and the impact of the chemicals in items we use everyday, led by informed activists.

A catered luncheon will be served. There will be all sorts of interesting displays, including books, SERRV items, prayer shawl and chemo cap instructions, cosmetics, Church World Service items, and more. Don't forget to bring your saved Kellogg's Boxtops for Education and Campbell's Labels for Education for Elon Homes & Schools!

Registration will be **\$14.00** and the Call Letter will go out to church representatives late Summer - watch for it, and plan **now** who to invite to come with you to Hartford on October 3<sup>rd</sup>. You'll be glad you did!

~Your SERVICE Committee

---

## **Need COMMUNITY SERVICE Hours?????**

Please see/talk to Rev. Claire (747-1901 #1), the Trustees, and/or Mrs. Cone and Mrs. Colley. We have plenty of opportunities for those looking for Community Service hours! And we are glad to help.

---

## **Second Hour Program – Oct. 18<sup>th</sup>**

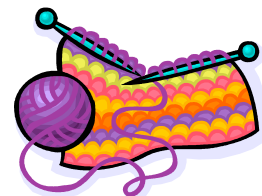
Following worship on Sunday, October 18<sup>th</sup>, please join us for a special Second Hour program. Douglas Boyea will present a slide show entitled 'Traveling in Egypt'.

Your Mission-Social Action Committee --- Audrey, Carol, Joni, Mary, Pauline, Rinette, Robin, Ruthe

---

## **Prayer Shawl Meeting**

The Prayer Shawl Ministry will meet on Thursday, October 22<sup>nd</sup> at 7:30 PM at Carol Peterson's home in Plainville. All are welcome to this fellowship of knitters and crocheters, or just come and enjoy our fellowship. For a ride, call Carol during the day at 747-5174. If you'd like to learn how to knit or crochet, please join us on the fourth Thursday of the month.



### UnitedScrip – Ongoing Fundraiser

**A BIG thanks for shopping with UnitedScrip!** This is our church’s ongoing fundraiser. This fundraiser is successful because our congregation faithfully purchases scrip shopping/gift cards week after week. **As you need gifts for weddings, baby and bridal showers, and birthdays, please consider giving gift cards or purchase your gifts with gift cards.** Simply pick up a UnitedScrip order form in the narthex or in Kelsey Hall, check which national stores, restaurants, and gas stations that you frequent, then make a check out to our church and give the order form with a check to Carol after church in Kelsey Hall. Be sure to purchase your store/gift cards for all your normal shopping needs. You will receive the full face value of the gift card, and our church will keep a percentage of the face value. It’s win-win for all!

<b>Our Scrip Profits for 2009:</b> <i>\$\$ (2009 Budget Target: \$2,000)</i>		<i>% of Annual Budget Achieved</i>
Month of Jan:	\$48.80	
Month of Feb:	\$107.90	
Month of March	\$143.70	
Month of April	\$84.55	
Month of May	\$99.95	
Month of June	\$133.75	
Month of July	\$43.90	
Month of August	\$111.75	<b>Through August 39% (target 67%)</b>
<b>Total Scrip Profit for 2009:</b>	<b>\$774.30</b>	

For August 23<sup>rd</sup> through September 13<sup>th</sup>, we thank the following church families who participated: Astolfi, Bamberg, Blanchard, Boiczyn, Drachenberg, Edge, Hodge, Pershken, Peterson, Potter, Rose, and Seeds and Mission-Social Action Backpacks & Music Committees. For any questions regarding our Scrip fundraiser, please call Carol Peterson during the day at 747-5174. Thanks.

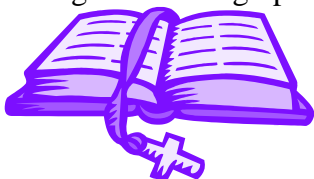
---

### *Christian Education Information*

On September 20<sup>th</sup> we had Rally Sunday which was a great success. We had over 20 children participate in the opening day activities which included singing, face painting, a fishing game, making crafts and yummy popcorn. The children also received a special reading from Steve Swets. All of us on Christian Education would like to extend a big thank you to our new superintendents Cheryl Cone and Suzanne Colley for planning such a wonderful event.

Rally Sunday also marked the beginning of registration for our expanded Sunday school program. We will be offering classes for children in pre-school up to middle school this year. Please see Suzanne or Cheryl to register your children if you haven’t done so yet.

This fall we will also be starting up the Heifer project again. The kickoff will be on October 11<sup>th</sup> when the Children will be decorating frosting containers for their monthly collection. Anyone who already has a container can bring theirs in to re-decorate. The first collection will be on October 25<sup>th</sup> and on the last Sunday of every month after that. The children have collected \$251.63 so far. Please help the kids reach their goal of filling up “Claire’s Corral” with lots of animals.



Our last big event of the season will be the 4<sup>th</sup> grade bible breakfast. We will be hosting all the 4<sup>th</sup> graders and their families on October 18<sup>th</sup> before church.

## **Pastoral Search Committee Needs Your Survey!**

On Tuesday, July 21<sup>st</sup>, following the Church Council Meeting, Moderator Ken Hodge emailed the newly appointed Pastoral Search Committee the following email:

*“Subject: Pastoral Search Committee Appointments”*

*All:*

*Congratulations on being selected to serve on the Pastoral Search Committee: Robin Anderson, Bill Calder, Rex Cone, Bev Letendre, Jim Parker, Carol Peterson, and Joanna Vastola!!!*

This Pastoral Search Committee was formed for the reason outlined in Ken’s May 5, 2009 letter to our church members:

*“In accordance with our Transitional Ministry Covenant between our Church, Rev. Dr. Claire Bamberg, the UCC Connecticut Conference and the Committee on Church and Ministry of the Farmington Valley Association, signed by all parties in June of 2007, we are about to enter into a period of deep reflection and discernment. In simple terms, over the next extended time period, and through the process described in this letter, we need to determine the vision of our church into the future, Rev. Claire needs to determine the vision of her ministry into the future, and then we will evaluate to see if there is a compatible match of those two visions.*

*“The early portion of this process is similar to a typical ministerial search process, in that a Pastoral Search Committee is appointed by the Church Council and the Committee develops a Church “Profile.” The Profile contains demographic information about our church and community, information about our Church’s goals, missions and visions, and a description and set of characteristics that we would look for in a minister to serve our church. The process would differ from a typical search process in that, if the Committee and Rev. Claire determine that there is a compatible match, the Church would be obligated to extend a ministerial “call” to her. It often requires explanation that a ministerial “call” is not the same as the act of hiring someone to do a job: A call involves more discernment among co-equal parties than a decision to hire, so that a covenant is then forged between the Church and the person they call. For both, there is an internal inclination towards the other, and a literally “calling out” in invitation to serve and response to invitation.*

The first step was achieved on July 21<sup>st</sup> when the Church Council appointed the members for the Pastoral Search Committee. Since then, the Pastoral Search Committee has created a six page **Pastoral Search Survey** that was distributed in church on the following four Sundays: Sept 20, Sept 27, Oct 4, and Oct 11, email blasted on Sept 21<sup>st</sup>, and mailed to those without email on Sept 21<sup>st</sup>. It is important that everyone 14 years (Confirmation Age) and older complete a separate Pastoral Search Survey so that we can capture your demographic data in order to accurately complete a new Church Profile. **October 12<sup>th</sup> is the deadline** for returning the Pastoral Search Survey. Return the survey to the Survey Box in the narthex; or mail it to the Church Office, or email it to [carolopete@comcast.net](mailto:carolopete@comcast.net)

If you have any questions about completing the Pastoral Search Survey, feel free to call anyone on the Pastoral Search Committee. Thank you for your participation – it’s very important!

Your Pastoral Search Committee – Bev, Bill, Carol, Jim, Joanna, Rex, and Robin

---

Mowing Mowing Mowing Mowing Mowing Mowing

Thanks to those who have already signed up to cut the grass around the church!

WE STILL NEED MOWERS FOR: October 18, and October 25.

Please see the sign-up sheet in Kelsey Hall to help out. ☺ Thanks!



**QUILTS NEEDED:** This year’s Snowflake Fair will include a Quilt Exhibit. We will need to “borrow” many quilts to have a really impressive display. If you have a new or old quilt you would like to have displayed please call Fran Rose at 747-9989 for more information. We hope to have all plans for this event completed by Nov 1<sup>st</sup>. Thanks for your consideration, Fran.

**Snowflake Fair-Save the Date!**



Our annual Snowflake Fair will be held on Friday, November 13 from 7pm-9pm and Saturday, November 14 from 9am-3pm. There will be baked goods and candies, crafts, white elephant crafts and silent auction. If you would like to help with the fair—setting up, working Friday or Saturday, or tearing down, please see Karen Hodge or Nicole Guglietta.

“For forty years you sustained them in the desert; they lacked nothing”  
(Nehemiah 9:21)



**Will You Grant a Wish?**

***There are many items  
the Church needs,  
Sized big and sized small.  
Choose from our Wish List;  
There’s something for all!***

\*\*\*\*\*

**The Church’s Wish List**

Plumbing Repairs	\$	150.00	
Guest Minister Fee	\$	125.00	
Office Supplies	\$	50.00	<i>Use Scrip cards for Supplies and be twice as nice to our Church!</i>

*Donations of Scrip gasoline cards, Scrip grocery cards, and dietetic foods gratefully accepted by our Minister for assistance to those in need. Canned and dry goods are collected on Communion Sunday for the Plainville Food Pantry. Helping hands make a wonderful gift, too.*

\*\*\*\*\*

*If you’d like to contribute an item or even part of an item from our Wish List for the Church, please write the name of the item in the memo portion of your donation check. Your check can be made payable to the Congregational Church of Plainville and placed in the offering plate or in an envelope in the Church Office mail slot. Your donations are tax-deductible to the extent allowed by law.*

**May God Bless you for your generosity!**



**--Imagine Another World Is Possible ---  
Coming October 4<sup>th</sup>: Neighbors in Need Offering**

Neighbors in Need (NIN) is a special mission offering of the United Church of Christ (UCC) that supports ministries of justice and compassion throughout the United States. The NIN Offering will be received on October 4<sup>th</sup>.

Two-thirds of the NIN offering is used by the UCC's Justice and Witness Ministries to fund a wide array of local and national justice initiatives, advocacy efforts, and direct service projects. Through *UCCTakeAction.org*, our national Justice and Witness Ministries office offers resources, news updates, and action alerts on a broad spectrum of justice issues. Working with members of the UCC Justice and Peace Action Network (a network of thousands of UCC justice and peace advocates), Justice and Witness continues its strong policy advocacy work on issues such as the federal budget, voting rights, immigration, health care, hate crimes, civil liberties, and environmental justice. Neighbors in Need also supports our American Indian neighbors in the UCC.

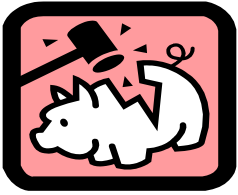
One-third of the NIN offering supports the UCC's Council for American Indian Ministries (CAIM). Historically, forebears of the UCC established churches and worked with Lakota, Dakota, Nakota, Mandan, Hidatsa, Arickara, and Hocak in North and South Dakota, Wisconsin, and northern Nebraska. Today there are 20 UCC congregations on reservations and one urban, multi-tribal UCC congregation in Minneapolis, Minnesota. These churches and their pastors are supported by CAIM. CAIM is also an invaluable resource for more than 1,000 individuals from dozens of other tribes and nations who are members of other UCC congregations in the United States.

**Neighbors in Need helps make another world possible. It needs your support.** Along with other UCC congregations, we will receive the NIN offering on Sunday, October 4<sup>th</sup> as part of our World Communion Sunday observance. Please give generously to this year's Neighbor's in Need Offering. This is your mission and mine.

Your Mission-Social Action Committee --- Audrey, Carol, Mary, Pauline, Rinette, Robin, Ruthe

---

## HOW ARE WE DOING? From the Finance Committee



	<u>Expenses</u>	<u>Income</u>
January	\$22,034.24	\$20,391.20
February	\$17,978.25	\$20,188.39
March	\$20,913.57	\$19,438.88
April	\$35,027.37	\$28,247.28
May	\$17,658.98	\$16,271.87
June	\$15,386.35	\$17,229.06
July	\$13,682.19	\$12,094.34
August	\$16,301.32	\$13,720.48
<b>TOTALS</b>	<b>\$158,982.27</b>	<b>\$147,581.50</b>

### A MESSAGE FROM CHRIS POTTER

Chris Potter (Plainville High School Senior) has chosen to bless our church with his Eagle Project and he has undertaken the HUGE task of replacing the cracked pavement and overgrown shrubbery that extends from the Church Street door of the church to the street. This walkway is used most by the teachers and students of the Plainville Day Care as they go to and from the bus each day.

Chris has worked very, very hard on this since he has a deadline to meet ~ and that is the end of October! Already the old shrubbery has been removed and new bushes planted. The church has been painted and over the next two weekends, rain or shine, the pavement will be removed and replaced.

Please join me in thanking Chris for his generosity when next you see him AND if you have the willingness and ability to help physically or financially, with this project, please feel free to give him a call at home!

We are proud of this aspiring Eagle Scout and grateful that he chose this much needed repair as his project.



**Our heartfelt sympathies to those who have lost family members in September:**



To the friends and families of: Joe Silverio, Harold Fish (wife of Joanne), Janet Grabowski, and Barbara Fitzmaurice, Guido Clento(Michele Janota’s uncle), Mary Janota(Bob Janota’s mother).

***In our Prayers this month, we remember:*** Alexa Pugh, Rodney Colella, Don Williams, Cathy Valvo, Jean Clark, Frank, Burton Johnson, Rick,, Graham and Lulu, Dave Mazurek, Bruce Edge, Albertine Legassi, Maisy Frances, Georgie, Jane Kowalchuk, Teresa Townsend, Ann Campbell, Nichols/Parker Families, Estelle MacEwen, Bunny Colter, Rochelle, David Crabtree, Judy Beausoleil, Shirley Brown, Michael Fraychak, Craig Mackenzie, Eleanor Kordes, Ruth Pater, Jessie Flanders, Pam Collins, Luke Santhouse, Dick and Joan Dante, Jim Fielder, Marcia and Woody Winslow, Gary Hubbell, Don Barrows, Dorothy “Dot” Haley, Maria Schatz, Davida Foy Crabtree, Jeff Schaefer, Peg Hoerle, Peg Young, Mary Devine, Gordon McCann, Helen McKernan, Jeane Pierson, Walter Smykla, ***and the families of*** Barbara Fitzmaurice, Janet Grabowski, Harold and Alan Fish, Joe Silverio, Sebby’s Aunt Lucy Stuckey, Marcelyn King, Christopher Dziura, Jane MacMillan, Hedwig Mazurek, Paul Dube, Paul Raisides, Marjorie Wilbur, Sharon Warren, as well as members and friends serving in the military: Spencer Pelletier, James Palmer, Gabriel Smykla, and Mark Terrill

We received a **“Thank you”** note from Bev Raymond in September....

*Dear Church Family,*

*Greatly appreciated your lovely card of concern sent from Church Family. Your caring touched my heart, I feel grateful for your nice card contact. Thank you and Bless all of you! Sincerely, Bev Raymond*

We received a note from Joanne Fish in September....

*To our Church Family in Plainville,*

*Thank you so much for all of your prayers and expression of sympathy. My daughter Penny and I appreciated them very much. Our son Alan went to be with the Lord on August 2 and Harold followed shortly on August 28<sup>th</sup>. Thank you all. Sincerely, Joanne Fish*

We wish a very **“Happy Birthday”** to the following members of our congregation who have

**September birthdays:** Verna Pekrul (10/1), Kelly Marshall (10/3), Jake Mazurek (10/8), Laura Schaefer (10/13), Audrey Posadas (10/14), Jason Guglietta (10/19), George Lewis (10/29), Albert Seeds (10/30).



We also wish a very **“Happy Anniversary”** to the following members with September

**anniversaries:** Fran Heap & Alan Conklin(10/12), Mr. & Mrs. Richard Pershken (10/15), Mr.& Mrs. Chad Chamberland (10/20), Mr. & Mrs. Rex Cone (10/20).

**MILESTONES AND HIGHPOINTS**

New Members	None reported
Transfers or terminations of membership	None reported
Inactive	None reported
Deaths	Harold Fish
Marriages/Unions	Robert and Patricia Bowman(vow renewal~55 <sup>th</sup> anniversary on September 10, 2009)
Births	None reported
Baptisms	None reported

## HOW TO TREAT YOUR MUMS

### Fall

Remove plant from its pot and gently loosen the bottom of the root ball. Plant with the top of the root ball just 1/2" deeper in the soil than it was in its pot. Press soil firmly around the root ball but leave the top soil loose and water thoroughly. Growth will be best in fertile, well-drained soil. Poor soil can be improved with the addition of compost, peat moss or other organic matter. Cover your plant at night in case of early frost to preserve the flowering period. Paper or plastic bags work well.

### Winter

Cut old stems down to 4-6". After the ground has frozen, apply 3-4" of mulch.

### Spring

Gradually remove mulch. Dig up and divide mature clumps to increase your number of plants. Any 5-10-10 fertilizer, superphosphate or bone meal at the rate of 1 T. per plant will improve growth. When shoots are 4-5" tall, pinch off top 3/4 to 1" of growth. Repeat this process every 6-8" until mid July to encourage attractive, bushy growth.

### Summer

Keep your soil aerated and don't allow it to become hard packed. Water well weekly during dry spells. Fertilize monthly until August. You can mulch with 1" of grass clippings or peat moss to hold down weeds and conserve moisture. If pests develop or leaves turn brown, a complete spray or dust should be applied. Rose sprays and dusts work fine and are readily available at local nurseries. *Thanks to Diana Drachenberg for submitting this!*



**The CHRISTIAN EDUCATION COMMITTEE** is pleased to be able to let you know that we have a **church school class**, offered during the regular church school time, for our **6-8th graders**. Rex Cone, Jr. is teaching the 6-8 component of the Seasons of the Spirit curriculum. Geared towards these older youth, the class explores maps, customs, concepts, and of course, the theology of the "there and then" as well as the "here and now" that follows the same scripture and topics explored both in church through worship and in the younger grades. Looking for a different kind of lunch or dinner time conversation? Come to church and explore scripture from LOTS of different angles. Whoever you are and where ever you are on life's journey, you are welcome here!!!!

